



# Construction Update

February 2024



# Current status on site

## Block C Internals

### Apartments Level 2-7

Level 7 internal walls and ceilings now complete and spray plastered within the apartments down to Level 2.

Kitchens installed to levels 7, 6 and 5 with appliances, ongoing installation on levels 4 and 3

Level 5, 4, 3 and 2 internal and external walls fully boarded with T&J ongoing, works to commence on ceilings once final snagging works to ventilation is undertaken.

MF Ceiling grid complete to all floors, internal walls on levels 4, 3 complete and 2 is progressing in line with window installation. Drylining works to the townhouse commenced.

First fix electrics now complete throughout all apartments and signed off on Levels 7, 6, 5, 4 & 3.

Second fix underway on levels 7 and 6 with sanitary ware delivered. First fix commencing in the townhouses.

Sprinklers are now complete throughout and the AOV smoke ventilation is first fix complete throughout and all components on site.

Bathroom tiling now complete on the top 4 floors, works will continue on the lower floors upon completion of the first fix plumbing. Ceilings are installed within all tiled bathrooms. Wooden flooring complete on levels 7, 6 and 5.

Ventilation now complete to all apartments.

Plumbing first fix and mid fix complete on level 7, 6 and 5 and underway on level 4, 3 & 2.

### Townhouses Ground to First floor

First fix party wall partitions complete, internal partitions commencing next week. MF Ceiling grid has commenced.

SVPs and RWP installed.

Kitchen Patressing complete.

Townhouse stairs installed to allow for additional boarding to the party walls to commence.

### Car park / Bin store / Common Areas / Plant room

All plant room block work complete, fire boarding to steelwork now complete and jumbo stud walling ongoing.

Main stair cores now plasterboard complete and ready for spray plaster.

GRP Riser grates installed to the mechanical risers, core holes complete to the electrical riser.

Secondary steelwork installed to the main roof allowing the AOV hatches and smoke extract units to be ordered ready for installation.

### Services / Infrastructure

Water Services in place for Block C, some additional water feeds required to the townhouses so that there are dedicated supplies for the sprinkler system.

Surface and water drains connected.

Site cabins moved to Block E location to accommodate Block D Construction, Additional site welfare installed by Block B to allow for greater numbers of personnel on site.

### Façade / Externals

CP Board and EPDM expansion joints complete.

Remedials to parapet complete.

Breather membrane installed to all levels on all elevations.

Cladding backing system underway on both south and east elevations with all brackets installed on

# Current status on site

---

the south elevation, 60% complete on the north and fire-breaks / insulation ongoing. Rail and slip now installed to the parapet and level 7 ,6 and 5 to the full perimeter working down the façade.

## **Block D Superstructure**

Crane base now complete and crane installed to allow commencement of the concrete core.

Slipform rig assembly complete, we will commence slide to 2.4m above FFL this week to allow for the trailing deck to be installed.

Peiko plates now delivered to site.

# Planned works in the next period

---

## **Block C**

Continued progress on Plumbing first and mid fix to the apartments on levels 3 and 2.

Second fix ventilation, plumbing and electrics to levels 7 and 6.

Windows installed to the townhouse lower floors.

Kitchen installation ongoing.

Spray plaster complete on levels 2.

Begin second fix carpentry and door installation.

Continue final floor and wall finishes.

Continues progress on the façades.

## **Block D**

Commencement of the concrete core from first floor.

Steelwork on order.

# Building Control / Consultants Reports and Tests

---

## **Building Control**

Positive inspections received in January & February, no areas of concern raised. Any items raised have been closed out. More inspection scheduled as we commence pre-pour inspections on Block D .

## **Checkmate**

Ongoing progress well with QA, reviewed apartments, externals and Block C – Historic outstanding information now tidied up and actions closed out as they arise.

## **EWS1 Form**

In progress – Visit arranged for ongoing installation inspection

## **Testing and Commissioning mechanical & electrical**

Underway, Floors 7-4 complete, Sprinklers tested on all apartment floors

## **Collating O&M Manuals**

Ongoing

# Design Consultants

---

## **Fletcher Rae - Architects**

A team of 5 directors, architects and technicians from Fletcher Rae are actively involved in the project.

As Lead Designer, Fletcher Rae are coordinating the design

## **SWF Consulting Ltd – Civils and Structures**

SWF were engaged in November 2019 to provide civil and structural engineering services, working alongside the Architects, MEP Consultants and Sourced Development to progress the Civils and Structural Design

SWF have now concluded all design obligations on Block B and C, with construction issue drawings now issued on Block D to allow works to progress,

The Concrete frame design for Block A is currently being reviewed by Fletcher Rae and we anticipate that this will be available by the end of October to allow further detailing by SWF Consulting.

## **QED – Mechanical and Electrical Designers**

Block C design is complete, and Stage 4/5 Co-ordination is being undertaken on a regular basis as works progress on site. On Block D, we now have a design brief, and we anticipate that this will become more detailed in the coming weeks to allow for tendering on the M&E to be undertaken.

## **Architecture**

- Block C – Stage 4/5 Design Co-Ordination ongoing, to be complete this month
- Block D – Stage 4 Design to be complete and issued by the End of September, some works into Early October as packages reviewed
- Block A – Significant milestones due imminently as we begin to commence the design co-ordination of the Structures and Civils to allow on build methodology to be concluded. We anticipate this to be undertaken and issued back to the engineers by the end of October. Full design pack from Block A to be concluded by the end of November
- Block E / Car Park – Stage 4 Design complete

## **Structural Design**

- Stage 4 Construction information issued on Block D allowing the core to go ahead, ongoing stage 5 construction support required and co-ordination with the Architectural drawings as released.
- Block E Stage 4 design issued, needs review by Architect – Ditto car park.
- Block A significant structural design required, once architect has concluded we have about 6-8 weeks of detailed coordination required.



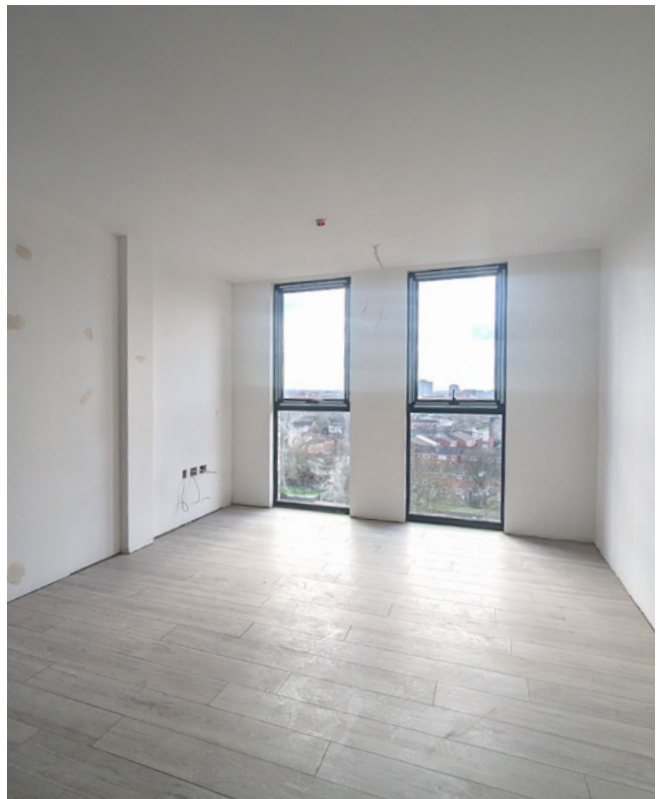
# On site construction images

---





# On site construction images





# On site construction images

---





# On site construction images

---





[www.sourceddevelopmentgroup.com](http://www.sourceddevelopmentgroup.com)

The information contained with this document is a general guide. This information does not constitute an offer or a contract and we (or anyone in our company) do not imply, make or give any representation, guarantee or warranty whatsoever relating to the terms contained herein. Any intending investor must satisfy themselves as to the correctness of any of the statements, plans or images contained herein. Images are for reference purposes only.