



Construction Update

January 2025



Current status on site

Block C Internals

Apartments Level 2-7

Levels 7-2 all plots complete.

All communal spaces are complete, along with lift installation.

Apartments are going through their final quality checks for completion.

Townhouses – GF & Level 1

All main works are complete, with remedial works being undertaken to the understairs store following the new electric and water connections.

Decoration is underway with all walls mist coated.

Car park / Bin store / Common Areas / Plant room

Plant room installations are complete.

Water connections are due on site this month, with the initial infrastructure works already complete.

Electrical infrastructure works are complete, the application for the final power on connection was made prior to Christmas and power is expected to be live by mid February, along with the water to the building.

Lift installations are complete and have been tested, final commissioning will be completed when the main power is live in February.

Façade / Externals

3 elevations are complete with the access equipment now stripped. The North Elevation cladding is nearing completion and the external works are underway.

Planned works in the next period

Block C

Floors 7-2, including communal areas are complete.

Townhouses

Install the front doors to the properties.

Decoration and snagging to the properties.

Test and commission the building, including life safety critical aspects.

Externals

Brickslip cladding to North Elevations to continue to completion.

Connect the building with water and electric new supplies.

Continue the road construction to tarmac level and hard landscaping around the building.

Block C Completion

The targeted completion for block C is March 2025.

Block D

Block D is to commence shortly, there has been a Planning application submitted to change the building height slightly, which is due to be approved shortly.

The core and frame will commence March 2025.

Building Control / Consultants Reports and Tests

Building Control

Building control are visiting site, the last visit was in November to check general progress, all comments from Building Control are positive and we are working in line with Regs.

Checkmate Home Warranty

Checkmate visited site in November, with no adverse comments, supply of documentation to allow the building to be signed off from a warranty point of view, which will be available when we achieve power on.

EWS-1 Form & Compliance

Specialist façade inspections have one further visit to undertake when the cladding is completed to sign off the building.

Design Consultants

Architect – Fletcher Rae

- As built information for the building has been issued.
- Coordination of Block D design in preparation for the commencement of the same.

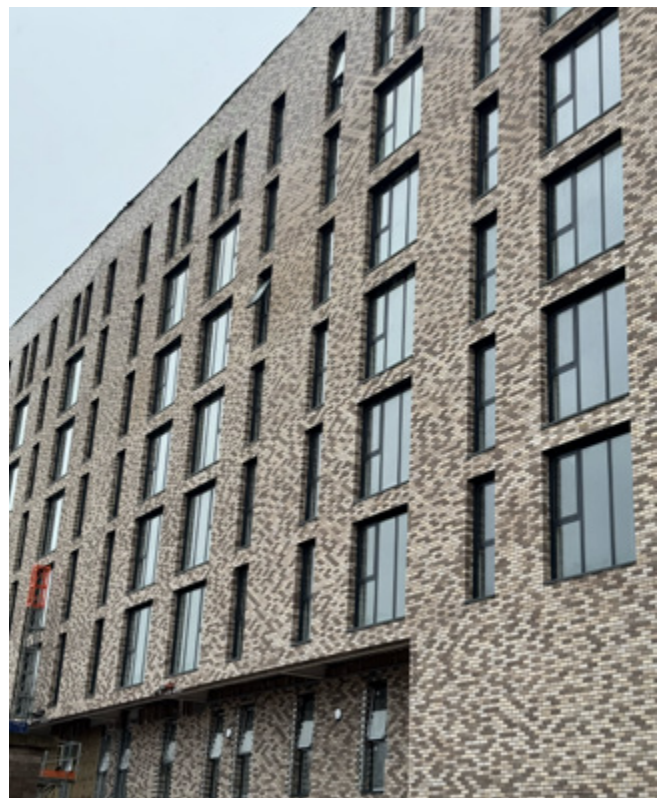
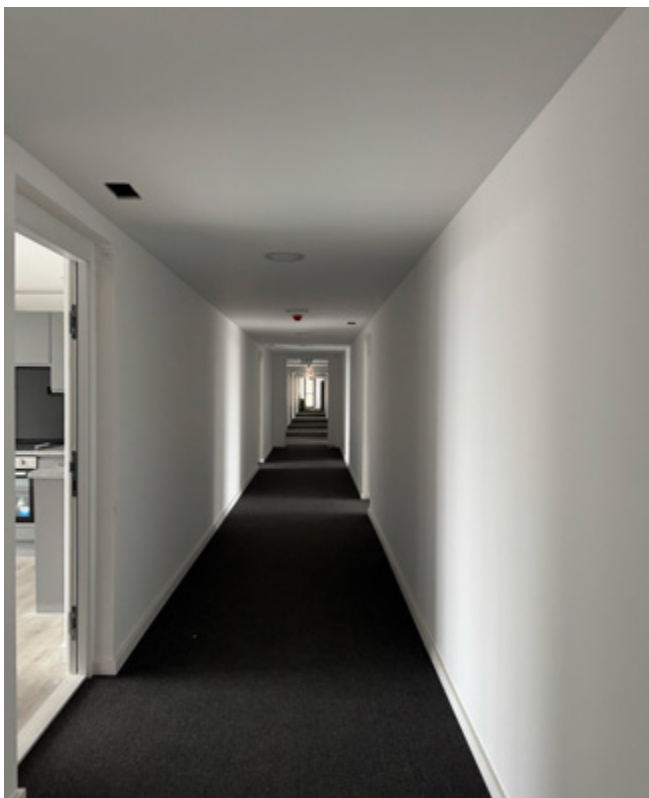
Structural Engineer

- As built information being produced for the block, nearing completion.
- Preparation underway for all future blocks with design and building submissions being completed.
- Coordination of Block D design ready for the core and frame installation.

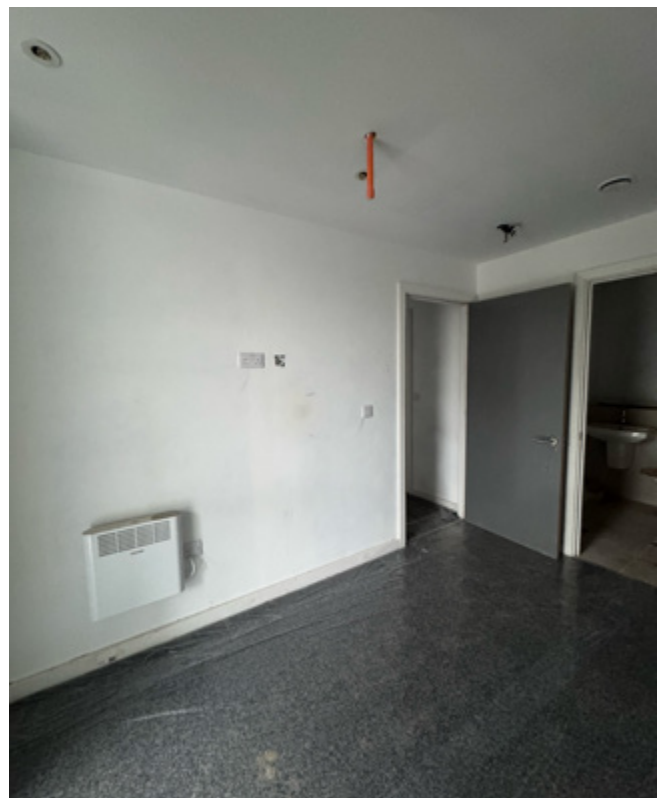
QED Mechanical

- Preparation of as built information.
- Coordination of design for Block D ready for commencement.

On site construction images



On site construction images



On site construction images





www.sourceddevelopmentgroup.com

The information contained with this document is a general guide. This information does not constitute an offer or a contract and we (or anyone in our company) do not imply, make or give any representation, guarantee or warranty whatsoever relating to the terms contained herein. Any intending investor must satisfy themselves as to the correctness of any of the statements, plans or images contained herein. Images are for reference purposes only.