



Construction Team Update

FEBRUARY 2022





Construction Update

FEBRUARY 2022



Current status on site

Block B

Floor 9

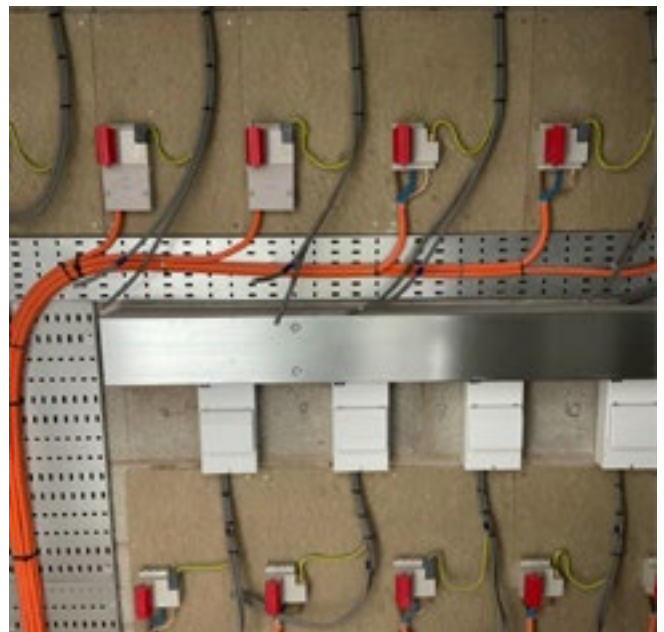
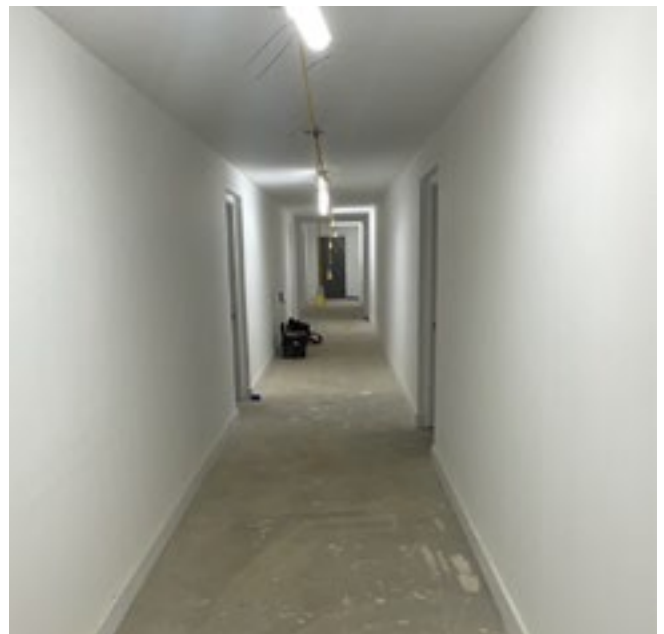
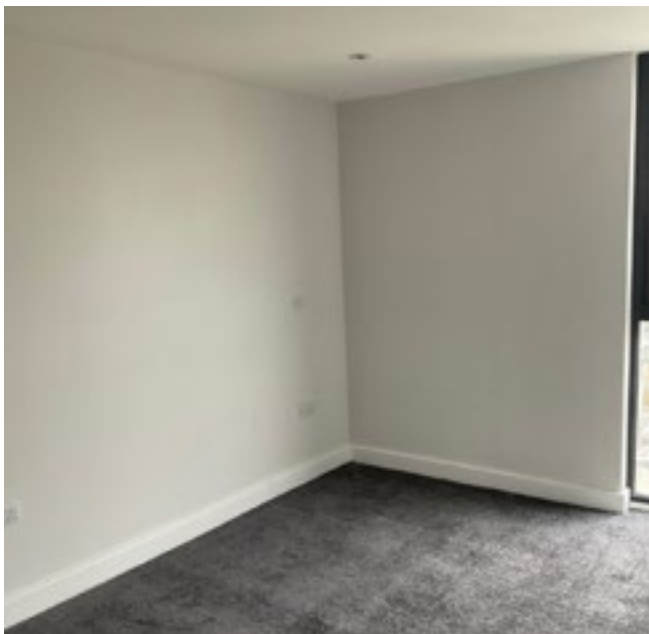
Apartment Decoration complete

Corridor decoration complete

Carpets complete

Meters procured

Final fire door to the stair core



Current status on site

Floor 8

Corridor ready for final coat and electrical commissioning

Final decoration complete



Current status on site

Floor 7

Final coats in progress

Ironmongery is complete

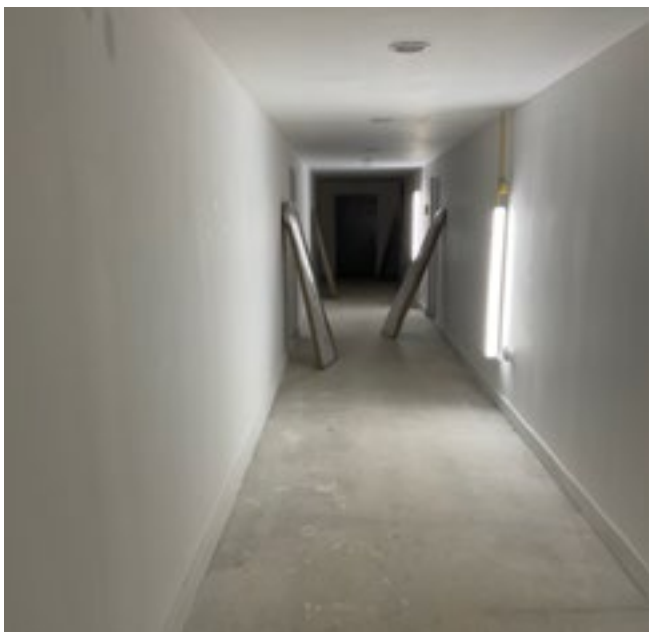
Corridor walls ready for decoration



Floor 6

Joinery 90% complete

Plaster snagging in progress



Current status on site

Floor 5

Mechanical & electrical 90% complete
Joinery 2nd fix 90%
Kitchens 90% complete including hoist
Laminate Flooring 90%
MF ceilings to the corridors 95%

Floor 4

Kitchens 90% complete including hoist
Mechanical & electrical 90% complete
Laminate floor 90%

Floor 3

Kitchens 90 % complete.
Laminate flooring 90%
Mechanical & electrical 90% complete

Floor 2

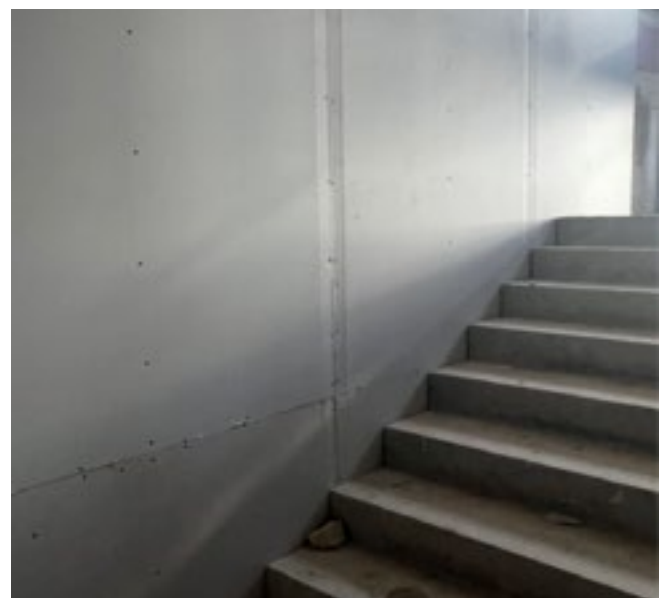
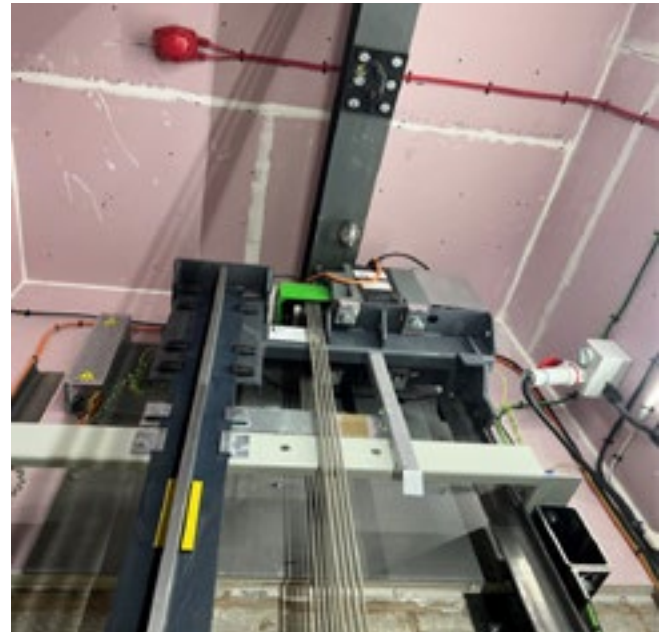
Bathroom and En-suite Tiling 90%
Kitchen installation 90%
Electrical 2nd fix 90%
Corridor MF 100%
Corridor wall 100%

Floor 1

Storerooms
External walls 85%
Internals wall 85%

Floor 0-0

Fire Fighting lift now installed 100%
Passengers lift now 50%
Stair core wall construction underway



Current status on site

Town house 7

Staircase 95% Complete

Mechanical & electrical 1st 100% Complete

2nd Side boarding ongoing

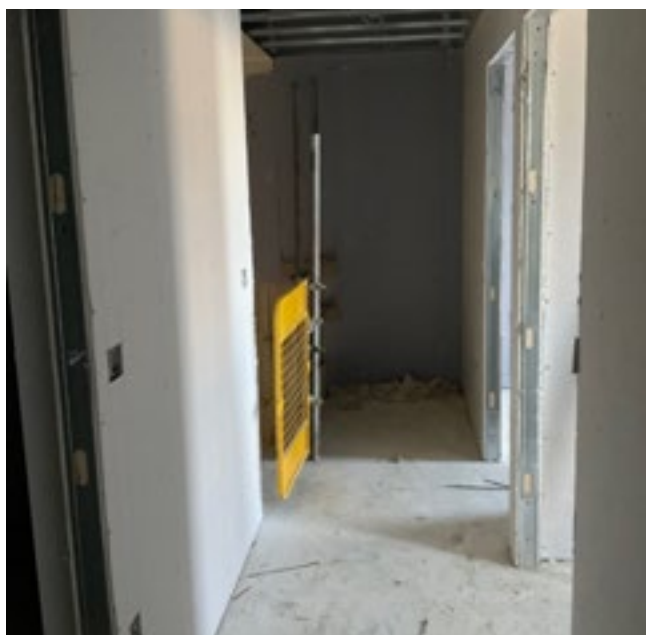


Town house 6

Staircase 95% Complete

Wall construction ongoing

2nd side boarding ongoing



Current status on site

Town house 5

Staircase 95% Complete
Wall construction ongoing
2nd side boarding ongoing

Town house 4

Staircase 95% Complete
Wall construction ongoing
2nd side boarding ongoing



Town house 3

Staircase 95% complete
Wall construction ongoing
2nd side boarding ongoing

Town house 2

Staircase 95% complete
Wall construction ongoing
2nd side boarding ongoing



Town House 1

Staircase 95% complete
Wall construction ongoing
2nd side boarding ongoing

Current status on site

Externals

HV mains has been connected to the transformer

Water main has been pressure tested and chlorinated

Block C slab base preparation complete WC 07th March

Block D Core base concrete pour WC 07th March

Mast climber installation WC 07th March

Building Control/Consultants Reports and Tests

Acoustic report

Requires three visits, first visit undertaken 03rd March 2022 and apartments passed.

ESW1

Report in place and ongoing.



Planned works in the next period

Block B

Planning approval agreed on the Facade
Decoration to communal areas
Hoist progression to completion following its removal
Completion of Town house boarding, DPM, Screed and kitchens
Power on, installation of Mechanical & electrical Meters
Water connection to be complete

Block C

Install mast climbers and hoist.
Install ground floor block and brickwork.
Continue with ground floor slab, including concrete pours.
Install external SFS and External weather board.
Install windows from mast climbers.
Install EDPM to windows.
Continue with Mechanical & electrical install.

Block D

Slab and the Core commencement

Site wide

Complete substation single ply roof and gutter.
Place order for tower crane.
Install piles for crane base and car park.
Complete ducting to site LV and HV.
Commence attenuation works
Continue with muck shift.

Design works

The consultants engaged so far are:

Fletcher Rae Architects

A team of 5 directors, architects and technicians from Fletcher Rae are actively involved in the project. Tender information has been provided to test the market and construction drawings and specification issued for construction purposes. As Lead Designer, Fletcher Rae are coordinating the design.

SWF Consulting Ltd

SWF were engaged in November 2019 to provide civil and structural engineering services, working alongside the Architects, MEP Consultants and Sourced Development to progress the civil & structural design.

SWF provided suitable design and drawings to satisfy one of the pre- commencement planning conditions, as well as United Utilities' approval the drainage scheme.

They have also provided design and drawings for foundations and the superstructure steelwork frame.

Tier Environmental Services

Completed Phase 2 ground investigation work and issued their report, which was submitted to Salford City Council. The findings of the report informed the design of the piles and foundations of Block C.

Earth Environmental & Geotechnical

Engaged to assess ground gases and a remediation strategy, all of which were completed and submitted to Salford City Council. The findings of the report were to the satisfaction of Salford City Council to enable the discharge of pre-commencement conditions.

QED – Mechanical & electrical Designers

Responsible for the design of all the electrical, plumbing, extract and supply ventilation systems, above ground drainage systems and all other elements of the incoming services.

Sourced Development Group – Principal Designer/ CDM

SDG have appointed an in-house principal designer. The pre-construction information pack, produced by the previous Principal Designer, has been reviewed and found to be adequate for the project and issued to Sourced Construction Group. A member of SCG chairs all the design and subcontractors' meetings and, therefore, perfectly placed to assess and advise on Designer's responsibilities and duties regarding Health & Safety.

Design works

Omega Fire/BB7

Working as a specialist alongside all other designers to ensure that the overall design satisfies all relevant regulations and requirements. Omega Fire have been liaising with Fletcher Rae and QED and issued an updated report.

Building Control

Building Consents Ltd have been employed to carry out all necessary plan checks and to work alongside the other designers to ensure that all required building regulations are achieved.

Indigo/WSP Planning Consultants

Involved with the project over the last six months, coordinating and collating all necessary information for submission and discharge of pre-commencement conditions.

PGLA Landscape Architects

PGLA have been appointed to provide full design and details for the Car Park podium roof, as well as the overall site's soft and hard standing areas. Some initial proposals have been shared with the team for review and comments.

Status of existing design

Architectural

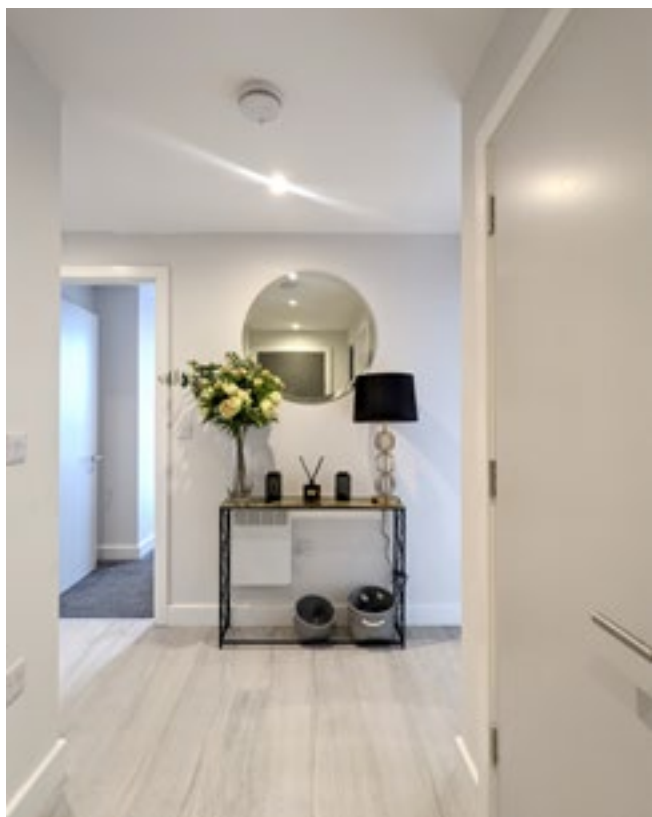
Fletcher Rae have progressed their design for Blocks A, C, D and E, as well as the Car Park, and have been liaising with the rest of the design team with exchange of models and CAD files.

Fletcher Rae have issued a full pack of construction information for Block B and C and are addressing site queries from the Principal Contractor.

Building setting out and general arrangement plans, fire strategy and internal partitions layouts for Block C, have been issued for construction purposes.

Block D design has been finalised and is now fully coordinated with the Structural Engineer's and MEP Consultant's layouts.

External landscape details have been reviewed and commented upon by Fletcher Rae.



Status of existing design

Civil & Structural Engineering

SWF Consulting visited site to inspect Block B upper floors' concrete being poured and commented on SFS subcontractor's design.

All Block C construction information, including drainage, sub structure and superstructure, has been issued to the Principal Contractor. A full set of calculations, for Block C, has been issued to the appointed independent Building Control for approval.

Block D design is now 90% complete with final coordination issues ironed out in multiple design work shops.

Full set of superstructure layouts and drainage information for Block D for construction purposes

A set of first and second floor steelwork and slab layouts have been issued for the CAR Park, with the foundations to follow shortly.

SWF have been liaising with Highways and are updating their 278 Works details to their requirements.



Status of existing design

MEP Engineering

QED have been liaising with Fletcher Rae to agree the pop-up locations, for Block C, to inform the below ground drainage design by SWF. They have, also, issued a full set of their performance mechanical and electrical drawings and specifications for this block.

Having developed the design and details of the perimeter walls, SAP calculations and overheating assessments have been revisited and improved results provided for Block C.

A set of mechanical and electrical drawings, as well as overheating calculations and SAP analysis, for Block D have been issued. A copy of the mechanical

and electrical specifications to follow, shortly.

QED are now coordinating the pop-up locations for Blocks A & E, as well space planning of the services to allow steelwork penetrations to be finalised.

QED have now been appointed by our MEP contractor to provide a fully coordinated design

QED have been attending design team meetings and workshops with the rest of the design team.





www.sourceddevelopmentgroup.com

The information contained with this document is a general guide. This information does not constitute an offer or a contract and we (or anyone in our company) do not imply, make or give any representation, guarantee or warranty whatsoever relating to the terms contained herein. Any intending investor must satisfy themselves as to the correctness of any of the statements, plans or images contained herein. Images are for reference purposes only.