



Construction Team Update

October 2022





Construction Update

October 2022



Current status on site

Block B

Level 9 - Level 2

Corridors decoration complete signage in place

Staircase handrail complete and all paint work to staircase complete

Reception area decoration complete and installation of furniture

Lifts commissioned and cleaned

Furniture packs arrived, installation commenced, level 9 and level 7 complete. All other floors are currently being installed

Wifi system fully complete

Town House 1 to 7

Townhouse 1 - 7 final decoration completed

Wifi system fully complete

Services / Infrastructure

Water services in place for block B and future blocks

Surface and foul water drains are now fully connected to accommodate all Blocks

BT installed to Block B

New site layout of cabins in Block E area

Façade

Façade progressing well, commenced installation of trays to all elevations - 4 elevations complete with trays, ready for the final material brick slips

Landscaping

50% of planters installed

Car park / Bin store / Cycle store / Plant room

Insulation installed to soffit areas for fire and acoustic requirements

Block C

Substructure in place

Drainage installed ground floor slab level

Steel frame installed and concrete floors installed

Partial lift shaft built

Roof installed and weather tight

Installation of SFS

Block D

Foundations complete

Building Control/Consultants Reports and Tests

Acoustic report

- Apartment / townhouses acoustic airborne testing is now complete and passed all safety requirements
- Block fully tested and completed
- Air test complete and passed

ESW1

- Report in place and ongoing.
- Fifth visit SFI Façade survey QA checks complete

Checkmate

- Ongoing progress well with QA, reviewed apartments, Externals and Block C

Testing and Commissioning mechanical & electrical

- 99% complete

Collating O&M Manuals

- Atlantic Mechanical & Electrical

Planned works in the next period

Block B

85 apartments sparkle cleaned

Install final furniture packs, through apartments 6-2

Fire cause and effect commissioning

Brickslip installation proceeding at speed

Block C

Install mast climbers and hoist

Install external weather board

Install windows from mast climbers

Install EDPM to windows

Continue with mechanical and electrical install

Fire protection installation

Scaffold install to lift shaft

Progression of block work to lift shaft

Block D

Core commencement

Site wide

Complete substation single ply roof and gutter

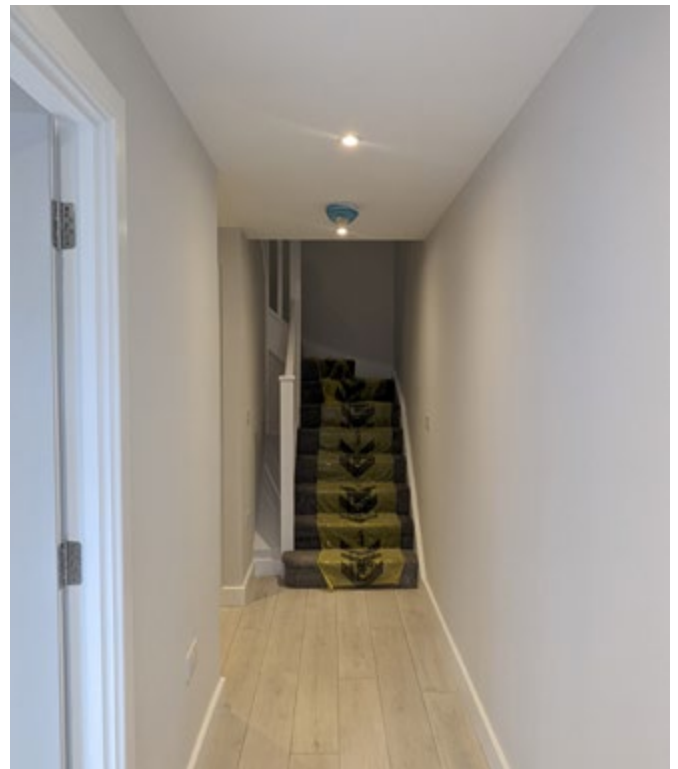
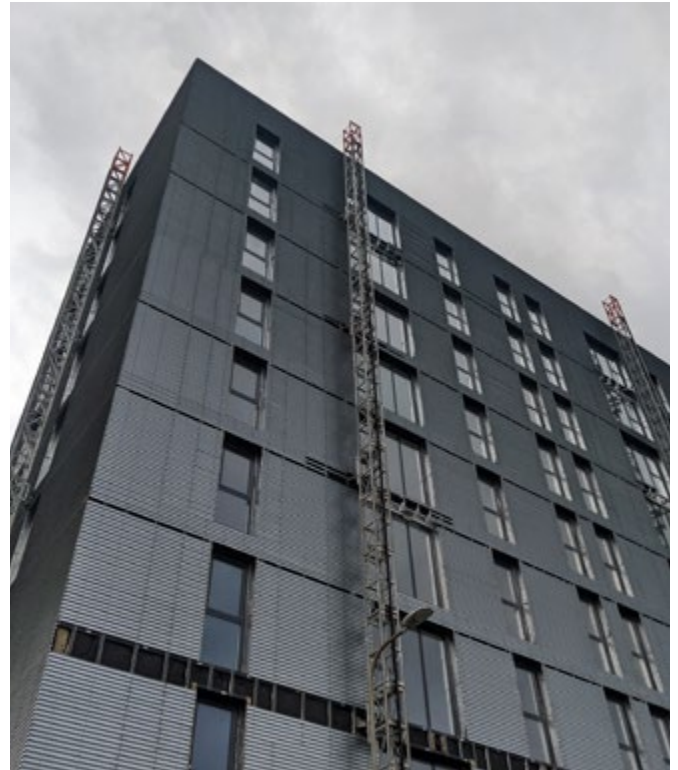
Place order for tower crane following wind study

Install piles for crane base and car park

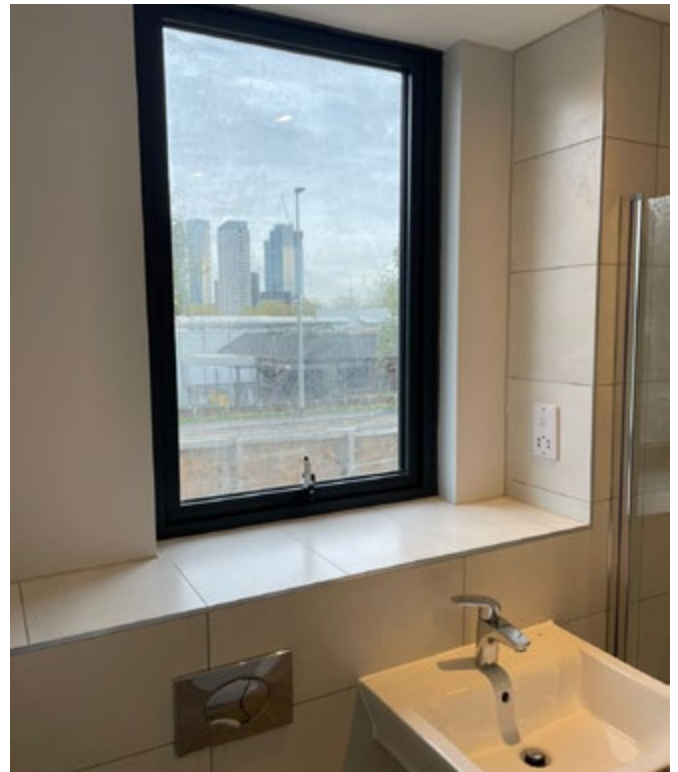
Commence attenuation works

278 works to Block B

Current status on site Block B



Current status on site



Current status on site Block C



Current status on site



Design works

The consultants engaged so far are:

Fletcher Rae Architects

A team of 5 directors, architects and technicians from Fletcher Rae are actively involved in the project. Tender information has been provided to test the market and construction drawings and specification issued for construction purposes. As Lead Designer, Fletcher Rae are coordinating the design.

SWF Consulting Ltd

SWF were engaged in November 2019 to provide civil and structural engineering services, working alongside the Architects, MEP Consultants and Sourced Development to progress the civil & structural design.

SWF provided suitable design and drawings to satisfy one of the pre- commencement planning conditions, as well as United Utilities' approval the drainage scheme.

They have also provided design and drawings for foundations and the superstructure steelwork frame.

Tier Environmental Services

Completed Phase 2 ground investigation work and issued their report, which was submitted to Salford City Council. The findings of the report informed the design of the piles and foundations of Block C.

Earth Environmental & Geotechnical

Engaged to assess ground gases and a remediation strategy, all of which were completed and submitted to Salford City Council. The findings of the report were to the satisfaction of Salford City Council to enable the discharge of pre-commencement conditions.

QED – Mechanical & electrical Designers

Responsible for the design of all the electrical, plumbing, extract and supply ventilation systems, above ground drainage systems and all other elements of the incoming services.

Simply CDM

SDG have appointed an in-house principal designer. The pre-construction information pack, produced by the previous Principal Designer, has been reviewed and found to be adequate for the project and issued to Sourced Construction Group. A member of SCG chairs all the design and subcontractors' meetings and, therefore, perfectly placed to assess and advise on Designer's responsibilities and duties regarding Health & Safety.

Design works

Omega Fire/BB7

Working as a specialist alongside all other designers to ensure that the overall design satisfies all relevant regulations and requirements. Omega Fire have been liaising with Fletcher Rae and QED and issued an updated report.

Building Control

Building Consents Ltd have been employed to carry out all necessary plan checks and to work alongside the other designers to ensure that all required building regulations are achieved.

Indigo/WSP Planning Consultants

Involved with the project over the last six months, coordinating and collating all necessary information for submission and discharge of pre-commencement conditions.

PGLA Landscape Architects

PGLA have been appointed to provide full design and details for the Car Park podium roof, as well as the overall site's soft and hard standing areas. Some initial proposals have been shared with the team for review and comments.

Status of existing design

Architectural

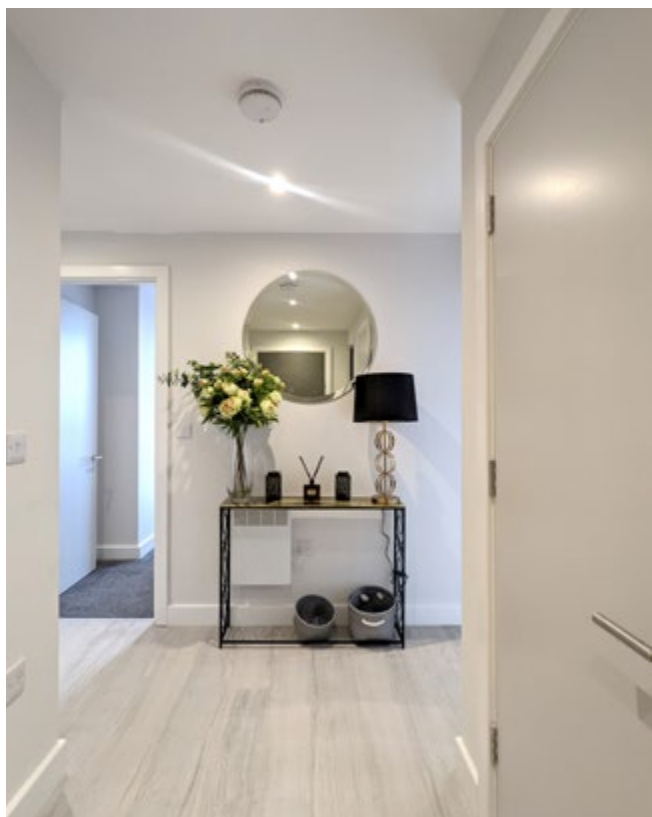
Fletcher Rae have progressed their design for Blocks A, C, D and E, as well as the Car Park, and have been liaising with the rest of the design team with exchange of models and CAD files.

Fletcher Rae have issued a full pack of construction information for Block B and C and are addressing site queries from the Principal Contractor.

Building setting out and general arrangement plans, fire strategy and internal partitions layouts for Block C, have been issued for construction purposes.

Block D design has been finalised and is now fully coordinated with the Structural Engineer's and MEP Consultant's layouts.

External landscape details have been reviewed and commented upon by Fletcher Rae.



Status of existing design

Civil & Structural Engineering

SWF Consulting visited site to inspect Block B upper floors' concrete being poured and commented on SFS subcontractor's design.

All Block C construction information, including drainage, sub structure and superstructure, has been issued to the Principal Contractor. A full set of calculations, for Block C, has been issued to the appointed independent Building Control for approval.

Block D design is now 90% complete with final coordination issues ironed out in multiple design work shops.

Full set of superstructure layouts and drainage information for Block D for construction purposes

A set of first and second floor steelwork and slab layouts have been issued for the Car Park, with the foundations to follow shortly.

SWF have been liaising with Highways and are updating their 278 Works details to their requirements.



Status of existing design

MEP Engineering

QED have been liaising with Fletcher Rae to agree the pop-up locations, for Block C, to inform the below ground drainage design by SWF. They have, also, issued a full set of their performance mechanical and electrical drawings and specifications for this block.

Having developed the design and details of the perimeter walls, SAP calculations and overheating assessments have been revisited and improved results provided for Block C. A set of mechanical and electrical drawings, as well as overheating calculations and SAP analysis, for Block D have been issued. A copy of the mechanical and electrical specifications to follow, shortly.

QED are now coordinating the pop-up locations for Blocks A & E, as well space planning of the services to allow steelwork penetrations to be finalised.

QED have now been appointed by our MEP contractor to provide a fully coordinated design

QED have been attending design team meetings and workshops with the rest of the design team.





www.sourceddevelopmentgroup.com

The information contained with this document is a general guide. This information does not constitute an offer or a contract and we (or anyone in our company) do not imply, make or give any representation, guarantee or warranty whatsoever relating to the terms contained herein. Any intending investor must satisfy themselves as to the correctness of any of the statements, plans or images contained herein. Images are for reference purposes only.