



Construction Update

September 2023



Current status on site

Block C Internals

Apartments Level 2-7

Level 7 internal walls and ceilings now complete and ready for plaster

Level 6 and 4 internal and external walls fully boarded with T&J ongoing, works to commence on ceilings once final snagging works to ventilation is undertaken.

MF Ceiling grid complete to all floors, internal walls on levels 4 and 3 progressing inline with window installation.

First fix Electrics now complete and signed off on Levels 7,6, 5 and 4 works ongoing with final plots on levels 3 and 2.

Sprinklers are now complete to the apartments with all floors tested, remaining works to the risers ongoing and into the townhouses W/C 18th September.

Bathroom tiling now complete on the top 4 floors, works will continue on the lower floors upon completion of the 01st fix plumbing. Ceilings are installed within all tiled bathrooms.

Ventilation now complete to all apartments with remaining plots on Level 2 complete this week

Plumbing first fix and mid fix complete on level 7 and underway on level 6

Townhouses Ground to First floor

First fix party wall partitions complete, internal partitions commencing next week.

SVPs and RWPs installed

Kitchen Patressing complete

Town House Stairs installed to allow for additional boarding to the party walls to commence.

Car park / Bin store / Common Areas / Plant room

All plant room blockwork complete, fire boarding to steelwork now complete and jumbo stud walling ongoing.

Main stair cores now plasterboard complete and ready for spray plaster

GRP Riser grates installed to the mechanical risers, core holes complete to the Electrical Riser

Secondary steelwork installed to the main roof allowing the AOV hatches and smoke extract units to be ordered ready for installation.

Services / Infrastructure

Water Services in place for Block C, some additional water feeds required to the townhouses so that there are dedicated supplied for the sprinkler system

Surface and water drains connected

Site cabins moved to Block E location to accommodate Block D Construction, Additional site welfare installed by Block B to allow for greater numbers of personnel on site.

Façade / Externals

CP Board and EPDM Expansion Joints complete

Remedials to Parapet complete

Breather Membrane installed to all levels on all elevations

Cladding backing system underway on both South and East Elevations with all brackets installed on the South Elevation, 60% complete on the North and firebreaks / insulation ongoing.

Fabricated Corner bricks now back on site, and Cassette tray from Shackerley ordered for delivery on the 25th September.

Current status on site

Block D Superstructure

Crane base piling now complete and fully tested with crane base construction underway.

Slipform Rig assembly complete, we will commence slide to 2.4m above FFL this week to allow for the trailing deck to be installed

Peiko plates confirmed for delivery on the 28th of September

Tower Crane installation adjusted to the 16th / 17th October to allow for the additional pile integrity testing required to satisfy the engineer.

Steelwork booked for 16th November, 4 weeks after commencement of the concrete core. Concrete core scheduled to be complete and de-rigged for early December

Planned works in the next period

Block C

Continued progress on mechanical and electrical first fix on levels 2,3 and Townhouses

Sprinklers complete throughout and fully tested

Ceiling fully closed up on levels 6 and 5, Corrdiors complete on level 7 and 6

Windows installed throughout

Kitchen installation (16th October)

Spray Plaster complete on levels 7 and 6

Commence and Complete AOV / Smoke Vent installation

Begin second fix carpentry

Commence Apartment internal door installations

Block D

Peikko plate Delivery

Installation of Tower Crane

Commencement of the concrete core from 1st floor

Steelwork on order

Temp Electrics

Building Control

1No inspections undertaken in the period, no areas of concern raised. Any items raised have been closed out. More inspection scheduled as we commence pre-pour inspections on Block D

Building Control / Consultants Reports and Tests

Checkmate

Ongoing progress well with QA, reviewed apartments, externals and Block C – Historic outstanding information now tidied up and actions closed out as they arise.

EWS1 Form

In progress – Visit arranged for partial façade sign off 20th September 2023

Testing and Commissioning mechanical & electrical

Underway, Floors 7-4 complete, Sprinklers tested on all apartment floors

Collating O&M Manuals

Ongoing

Design Consultants

Fletcher Rae - Architects

A team of 5 directors, architects and technicians from Fletcher Rae are actively involved in the project.

As Lead Designer, Fletcher Rae are coordinating the design

SWF Consulting Ltd – Civils and Structures

SWF were engaged in November 2019 to provide civil and structural engineering services, working alongside the Architects, MEP Consultants and Sourced Development to progress the Civils and Structural Design

SWF have now concluded all design obligations on Block B and C, with construction issue drawings now issued on Block D to allow works to progress,

The Concrete frame design for Block A is currently being reviewed by Fletcher Rae and we anticipate that this will be available by the end of October to allow further detailing by SWF Consulting.

QED – Mechanical and Electrical Designers

Block C design is complete, and Stage 4/5 Co-ordination is being undertaken on a regular basis as works progress on site. On Block D, we now have a design brief, and we anticipate that this will become more detailed in the coming weeks to allow for tendering on the M&E to be undertaken.

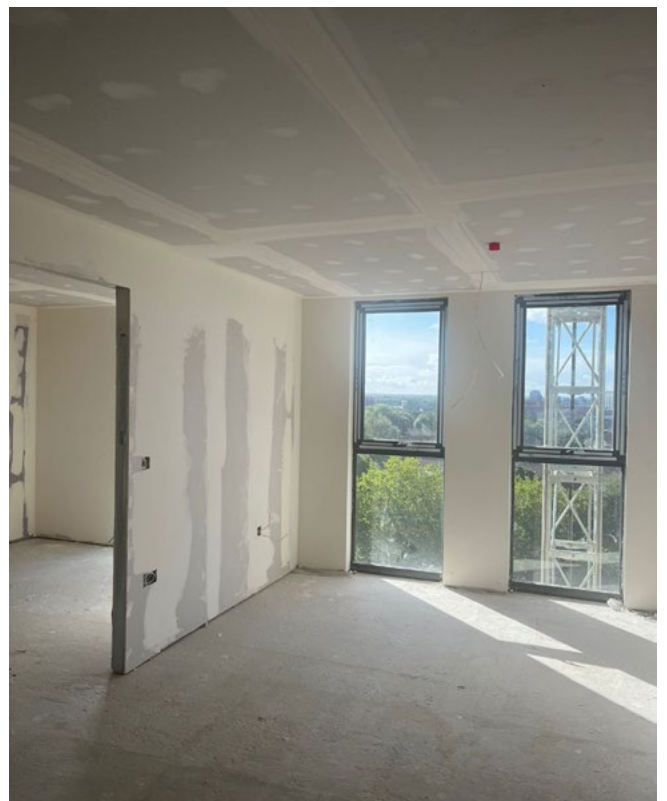
Architecture

- Block C – Stage 4/5 Design Co-Ordination ongoing, to be complete this month
- Block D – Stage 4 Design to be complete and issued by the End of September, some works into Early October as packages reviewed
- Block A – Significant milestones due imminently as we begin to commence the design co-ordination of the Structures and Civils to allow on build methodology to be concluded. We anticipate this to be undertaken and issued back to the engineers by the end of October. Full design pack from Block A to be concluded by the end of November
- Block E / Car Park – Stage 4 Design complete

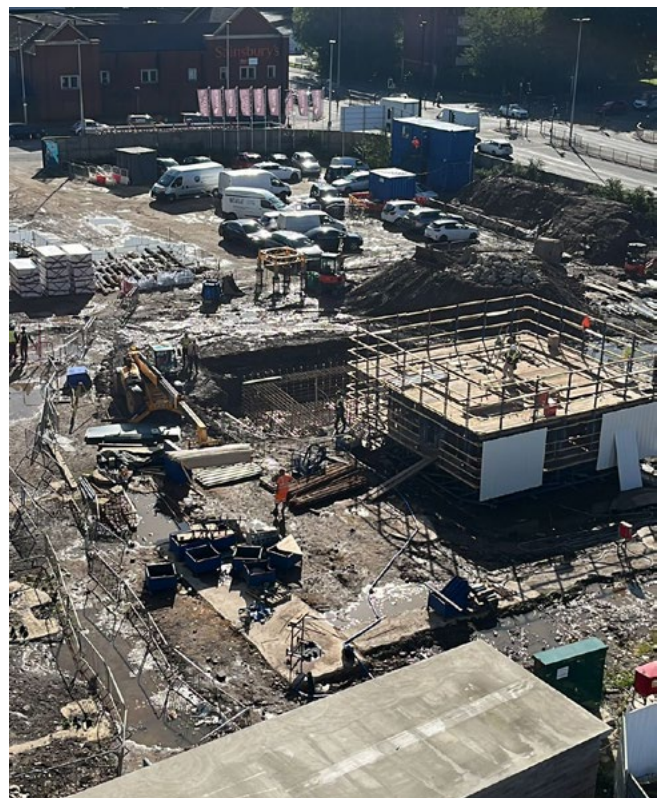
Structural Design

- Stage 4 Construction information issued on Block D allowing the core to go ahead, ongoing stage 5 construction support required and co-ordination with the Architectural drawings as released.
- Block E Stage 4 design issued, needs review by Architect – Ditto car park.
- Block A significant structural design required, once architect has concluded we have about 6-8 weeks of detailed coordination required.

On site construction images



On site construction images



On site construction images





www.sourceddevelopmentgroup.com

The information contained with this document is a general guide. This information does not constitute an offer or a contract and we (or anyone in our company) do not imply, make or give any representation, guarantee or warranty whatsoever relating to the terms contained herein. Any intending investor must satisfy themselves as to the correctness of any of the statements, plans or images contained herein. Images are for reference purposes only.