



Construction Update

November 2024



Current status on site

Block C Internals

Apartments Level 2-7

Levels 7-2 all plots complete.

All communal spaces are complete, along with lift installation.

Apartments are going through their final quality checks for completion.

Townhouses – GF & Level 1

All kitchens are installed, tiling is complete, plumbing and electrical installations are complete.

Hard flooring and carpets are being installed, along with final woodwork in preparation for decoration.

Car park / Bin store / Common Areas / Plant room

Plant room installations are complete.

Water connection to the building is nearing completion, this is due in the next couple of weeks.

Electrical installations to the building are complete. The substation equipment and cabling for the building are due to be installed shortly and legals are progressing to power up the building.

Façade / Externals

Three elevations are complete with the access equipment now stripped.. The North Elevation cladding is ongoing and the external works are now progressing to complete the hardstandings and the access road to the rear of the building.

Planned works in the next period

Block C

Floors 7-2, including communal areas are complete.

Townhouses

Continue installation of hard flooring to the ground floors, with skirtings being installed.

Complete the carpet installation to the upper floors.

Install the front doors to the properties.

Decoration and snagging to the properties.

Complete the final fix plumbing and electrical works.

Externals

Brickslip cladding to North Elevations to continue to completion.

Continue with water and electrical installations to the building.

Continue the road construction to tarmac level and hard landscaping around the building.

Building Control / Consultants Reports and Tests

Building Control

Building control are visiting site, the last visit was in November to check general progress, all comments from Building Control are positive and we are working in line with Regs.

Checkmate Home Warranty

Checkmate visited site in October, with no adverse comments, supply of documentation to allow the building to be signed off from a warranty point of view, which will be available when we achieve power on.

EWS-1 Form & Compliance

Specialist façade inspections have one further visit to undertake when the cladding is completed to sign off the building.

Design Consultants

Architect – Fletcher Rae

- As built information for the building is being produced.
- Coordination of Block D design in preparation for the commencement of the same.

Structural Engineer

- As built information being produced for the block
- Preparation underway for all future blocks with design and building submissions being completed.
- Coordination of Block D design ready for the core and frame installation.

QED Mechanical

- Assisting with final queries over sprinkler safety systems and plant room services.
- Preparation of as built information.
- Coordination of design for Block D ready for recommencement.

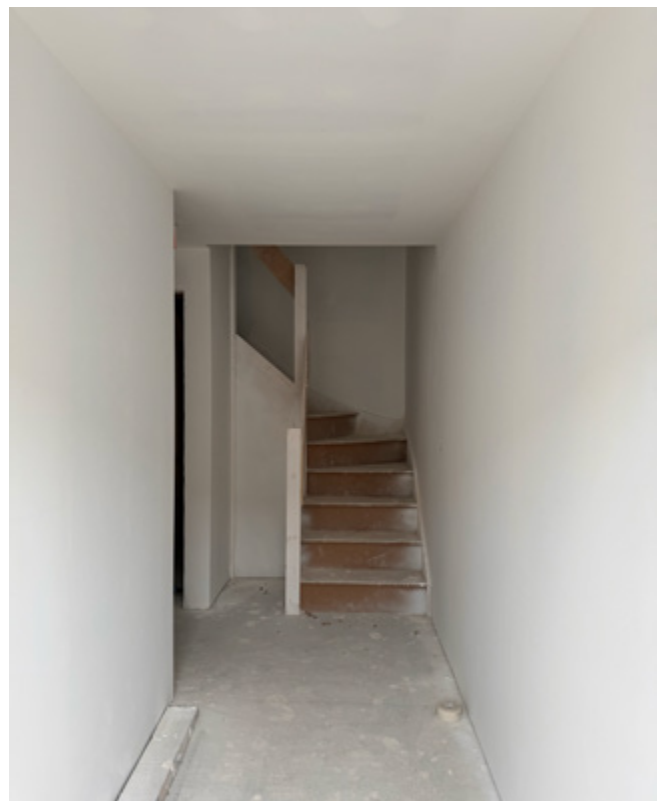
On site construction images



On site construction images



On site construction images





www.sourceddevelopmentgroup.com

The information contained with this document is a general guide. This information does not constitute an offer or a contract and we (or anyone in our company) do not imply, make or give any representation, guarantee or warranty whatsoever relating to the terms contained herein. Any intending investor must satisfy themselves as to the correctness of any of the statements, plans or images contained herein. Images are for reference purposes only.